



Sector Update

Information from DCSI



15 June 2017

[News](#)

[Government supports for providers](#)

[Local Area Coordinators](#)

[Events](#)

[Statistics and analysis](#)

We're all aware the full NDIS rollout starting on 1 July is approaching fast.

To ensure the NDIS is successful in South Australia, we have a responsibility to work together and adapt to the challenges the scheme presents.

The NDIS is certainly changing the way that the disability sector does business. We're going through this change together, so supporting each other is vital, and our clients will ultimately benefit from a smooth transition.

On 14 June, the Productivity Commission released a position paper on the NDIS Costs and is calling for feedback. Please read more information [below](#) and provide your thoughts before 12 July.

It is important that you have access to the latest information about the NDIS implementation and Commonwealth Aged Care reforms, and this newsletter is one way that we helping to keep you informed.

I hope you find the information in this newsletter useful. If there is any particular information you would like to see in a future edition, please let us know via [email](#).

Lois Boswell

Deputy Chief Executive

Department for Communities and Social Inclusion

News

Productivity Commission announcement

The Productivity Commission yesterday released a position paper on the NDIS Costs.

This paper outlines the Commission's early thinking on NDIS costs. Feedback is sought on the Commission's preliminary conclusions, draft recommendations and any additional issues that should be considered before the public release of the final study report in September 2017.

The community is invited to examine the paper and to make a written submission or comment by Wednesday 12 July 2017.

The paper can be found online [here](#).

The Commission will also undertake consultations to facilitate feedback from participants to inform the preparation of the study report.

[Back to the top](#)

Independent Pricing Review

The NDIA has encouraged NDIS providers and participants to participate in its Independent Pricing Review. The Review will seek to better understand a range of issues critical to creating a strong, innovative and viable market, which will eventually lend itself to price deregulation.

Stakeholders will soon be provided with information about how to engage with the Review.

Growing the market for disability supports in a way that establishes a balance between demand and supply is critical not just for participants and providers, but also for the Scheme's longer term financial sustainability. Price plays a key role in getting that balance right.

Terms of reference for the review include:

- National versus regional pricing;
- Pricing of services with different levels of complexity;
- Pricing of short stay support, and for emergency and crisis supports;
- Thin and undersupplied markets, particularly in regional and remote areas;
- Relative provider efficiencies (including overheads);
- Adequacy of provider returns; and
- Effectiveness of the Hourly Return approach used to set prices.

[Back to the top](#)

Improving processes

Earlier this month, the NDIA wrote to existing and potential participants, their families, carers and providers to inform them of major work underway to improve processes.

The work will deliver a significantly upgraded quality of participant and provider experience in a way that remains consistent with maintaining the Scheme's financial sustainability.

Since April, the NDIA has been working with more than 200 participants, providers, peak disability bodies and other stakeholders around Australia. To date, 400 specific improvement ideas and 200 solution concepts have been generated.

Read more about this process [here](#).

[Back to the top](#)

National Disability Insurance Agency information

The NDIA has recently introduced a weekly question and answer update. The update is a new way for the NDIA to respond to the most common questions asked by people on the NDIS social media channels.

You can find the first updates on the NDIS [website](#), [Facebook](#) and [Twitter](#).

A new glossary of NDIS terms is now available on the NDIS website. An Easy English version will also be added soon. Download the glossary from the [factsheets page of the website](#).

[Back to the top](#)

Stay in the loop

Stay up to date on community events happening near you by visiting the [events page](#) on the NDIS website. New dates are added every week.

If there is something you want to know more about, or an article you would like to see in the next edition of this newsletter, please send us an [email](#).

If you would like to be added to the distribution list for this newsletter, please [email](#) us.

[Back to the top](#)

Have your say – NDIS code of conduct

The Commonwealth Government is developing a national code of conduct to promote safe and ethical service delivery for the NDIS. Consultation is now open and people with disability, their families, carers, providers and workers are encouraged to share comments and feedback. You can read the discussion paper, complete a survey or [make a submission online](#) by 21 June 2017.

[Back to the top](#)

ATSI engagement strategy launched

The NDIA recently launched the Aboriginal and Torres Strait Islander Engagement Strategy and the Rural and Remote Strategy.

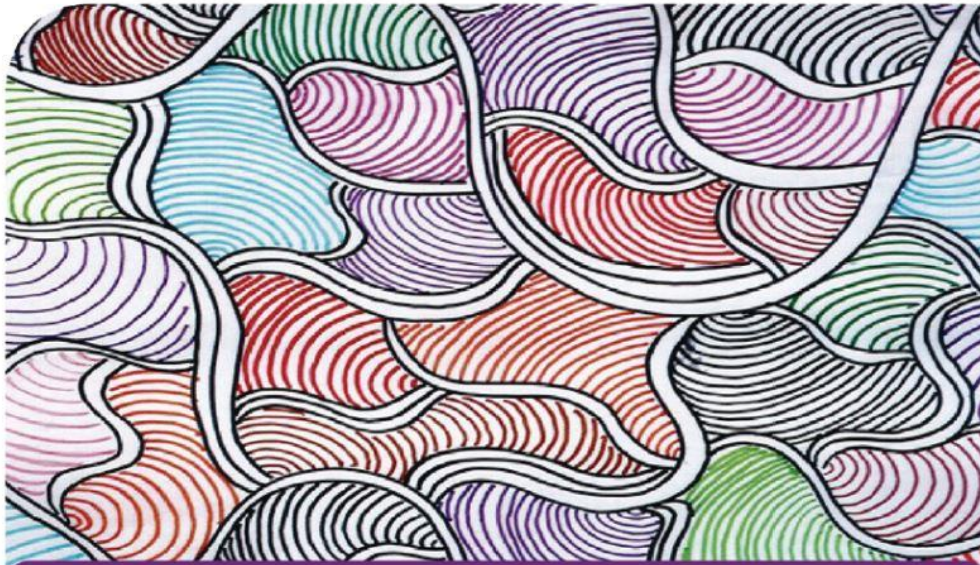
These strategies outline how the NDIS will be delivered to all eligible Australians regardless of where they live, and in a culturally respectful manner.

The strategies focus on enabling quality engagement, service delivery and leadership to ensure the successful delivery of the NDIS in rural and remote communities and Aboriginal and Torres Strait Islander communities.

This includes:

- Identifying and drawing upon the strengths and unique characteristics of rural and remote communities to enable greater service delivery.
- Developing creative supports and services to increase opportunities for people with disability living in rural or remote areas.
- The adoption of an 'I' model phased approach of 'introduction, initiation and invitation' for establishing sustainable relationships with Aboriginal and Torres Strait Islander communities.

You can find the strategies on the NDIS [website](#)



Aboriginal and Torres Strait Islander Engagement Strategy

[Back to the top](#)

Government supports for providers

Supporting clients to get NDIS ready

There are different ways that you can support your clients as they prepare to move into the NDIS. One of these is to prepare a summary of the current services your clients receive from you, to help them with their planning conversation with the NDIA,

The timing of your clients moving into the scheme will depend on where they live. Dates and locations of the rollout schedule for adults in South Australia can be found on the NDIS [website](#).

From the date of their approved plan, the NDIA will provide funding to the client so they can choose their own services and providers.

It is important to ensure staff providing direct services check with clients and their families to see if they have an approved NDIS plan or are expecting

one soon. We will notify you as soon as possible but this will minimise the risk of your organisation continuing to provide services to clients who have an approved NDIA plan outside of any funding agreement.

[Back to the top](#)

Adults entering the NDIS from 1 July 2017

Adults 18 to 64 years of age will begin to enter the NDIS from 1 July 2017, based on where they live. When the NDIS commences in a region, people currently receiving supports through South Australian Government specialist disability services will be moving first.

The NDIS [website](#) has more information about the rollout schedule, including a video and map. You can also see technical, step-by-step instructions on how the NDIA supports service providers [here](#).

While the Commonwealth Government is responsible for the roll out of the NDIS through the NDIA, the South Australian Government (DCSI) remains committed to supporting clients until they transition.

We are currently developing a fact sheet for NGOs to explain funding arrangements under the NDIS. Look out for this in a coming edition of this newsletter.

[Back to the top](#)



Commonwealth Continuity of Support Programme

From 1 October 2017, the funding and administrative responsibility for existing disability clients aged 65 and over will transfer from the South Australian Government to the Commonwealth Continuity of Support (CoS) programme, based on where they live, in line with [the NDIS roll out schedule](#).

The CoS programme will support people aged 65 and over currently receiving DCSI funded specialist disability services, but who are ineligible for the NDIS at the time of its implementation in a region. The Commonwealth Department of Health is responsible for administering the CoS programme.

If you currently provide disability services to older clients, you should have received a letter from the Commonwealth Department of Health to confirm your organisations details, current service delivery and funding. This will assist in the preparation of new Commonwealth funding agreements and the transfer of clients to the new arrangements. Any questions should be directed to the Commonwealth at SA.CoS@health.gov.au.

Further information on the CoS programme is available on the Commonwealth Department of Health [website](#).

[Back to the top](#)

Local Area Coordinators

Local Area Coordinators – how they work

The role of the Local Area Coordinator (LAC) Community Partner is to develop relationships between the NDIS, people with disability, their families and carers, and the local community (including informal networks, community groups, disability and mainstream services). The LAC partner delivers on the [Information, Linkages and Capacity Building Framework](#). These activities include information, linkages and referrals; capacity building for mainstream services; community awareness and capacity building.

LAC Community Partners will undertake pre-planning, planning and plan implementation activities on behalf of the NDIA. They will work in two ways:

1. Service providers may be contacted by LAC Community Partners to assist people transition to the NDIS.
2. Service providers may refer a client to the LAC Community Partner to

receive services delivered under the Information, Linkages and Capacity Building Framework.

[Back to the top](#)

Feros Care partnering with the NDIA in the north

The Commonwealth Government recently announced Feros Care as the successful Local Area Coordinator (LAC) Community Partner in Barossa, Light and Lower North and Northern Adelaide. [Feros Care](#) will support the rollout of the NDIS in the north from 1 July 2017. The LAC provides services to build participant capacity, develop, implement and review plans and support participants to find and receive services in their local community.

You can read the full media release [online](#).



[Back to the top](#)

Events

Specialist Disability Accommodation workshop

Thanks to everyone who attended the Specialist Disability Accommodation (SDA) workshop on 2 May for disability accommodation providers. We provided an overview of SDA and timings of the transition to the NDIS for our existing clients living in supported accommodation.

Meanwhile, the NDIA shared its new Supported Independent Living (SIL) template with providers on 1 June.

Providers already registered for the support category of Daily Task/Shared Living are required to use the new SIL pack, which is available on the NDIS [website](#). The SIL pack and quoting template allow NDIS planners to process provider quotes more efficiently and provide a more nationally consistent process.

Supported Independent Living Workshops for SIL providers and support coordinators will be held over the coming months. The workshops will provide an overview of SIL, how to use the quoting templates and how to submit a quote.

Initially, providers already registered for the support category of Daily Tasks/Shared Living and Support Coordinators who are providing services in the Northern Adelaide, Barossa, Light and Lower North regions will be invited to attend a workshop. People in this region living in Specialist Disability Accommodation will enter the Scheme from 1 November 2017. NDIA will release further information about the workshops soon.

[Back to the top](#)

Supported Residential Facility forum

A Supported Residential Facility (SRF) and NDIS information session was held on Friday 9 June. About 40 people from 20 SRFs attended, as did representatives from the SRF Association.

We are committed to an ongoing collaborative working arrangement with the sector and acknowledge that these operators have, for many years, provided services to some of our state's most vulnerable people.

The forum was a productive opportunity for us to hear about the issues that are affecting individual SRF operators as we transition to the NDIS.

We continue to work together to reach the best possible outcomes for operators and their residents and have proposed an ongoing whole-of-sector working group to achieve this.

We will also continue to support operators in ways such as assisting adjustment to new business models and reducing red tape.

[Back to the top](#)

NDIS awareness campaign and community information expos

To support the rollout of the NDIS, the South Australian Government is developing a broad public awareness campaign to assist people with disability, and their family and carers, to better prepare for the NDIS. The campaign will educate the public about the NDIS, and its benefits to South Australians with disability, as well as provide information to job seekers looking to work in the disability sector.

The campaign includes a series of 23 community expos across the state over the next 12 months. These expos will provide opportunities for people to find out more about the NDIS and the opportunities it presents.

The first three expos (held in Gawler, Mawson Lakes and Modbury)

attracted about 450 visitors. They were also very popular with stallholders, with more demand for stalls than we could accommodate. Due to the level of interest, we have decided to hold another expo in the northern Adelaide region, at Golden Grove Recreation Centre on Tuesday 18 July. You will soon be able to register to participate as a stallholder at this expo, at www.mysupportmychoice.sa.gov.au

You can also read more about our expos, see photos and other news on our DCSI [Facebook](#) and [Twitter](#) pages.

Nobody knows my disability like me.



Government of
South Australia



[Back to the top](#)

Statistics and analysis

NDIS by the numbers

The below graphic shows the latest data about how the NDIS rollout is

progressing in South Australia. It's important to note the NDIS is currently only available to people up to 17 years of age in South Australia, so these numbers only relate to them.

**Autism:
most common
primary type
of disability**

(by almost half)

followed by
intellectual
disability.

13,768

people have requested
to join the Scheme.

12,950 clients

deemed eligible

for the NDIS.

947

There are
947 NDIS
registered
providers.



11,052 people
have received
an approved plan.

*statistics from the March 2017
NDIS Quarterly Report.

[Back to the top](#)

Analysis underway on SA disability support market

We have recently asked KPMG to analyse the South Australian market for specialist disability support services.

KPMG will analyse the current disability sector, and their research will provide critical information that will educate future decisions about the growth of the sector under NDIS.

The analysis will include work to understand the current market for disability services in South Australia, including demand and availability of services. It will also identify potential opportunities to build the sector in the future.

KPMG will be developing a tool to identify current and future pressures on demand and supply of disability services in the state. The tool will enable DCSI to identify barriers to market development, and help us to develop strategies to address them.

More information about the KPMG analysis will be provided as it becomes available.

[Back to the top](#)



Government of South Australia

Department for Communities
and Social Inclusion

